

Copyright is owned by the Author of the thesis. Permission is given for a copy to be downloaded by an individual for the purpose of research and private study only. The thesis may not be reproduced elsewhere without the permission of the Author.

‘Te Mana Whakahaere - Te Whaiora Māori’-

**Change Management
and Māori Health Development.**

William Wiremu Lance Manaia

‘Te Mana Whakahaere - Te Whaiora Māori’-

Change Management and Māori
Health Development.

A study on the management of Māori
health strategies in a changing
health sector from the 1991 health
reforms to the year 2001.

A thesis submitted for the Degree of
Doctor of Philosophy in Social Science

Massey University

Palmerston North

January 2002

He Mihi

E ngā waka

E ngā hau e whā

E ngā iwi

Kia mihia te mano tini kua mene ki ngā Hawaiki katoa

Rātou te tutūtanga o te puehu

Te whiunga o te kupu i ngā wā takatū ai rātou

Heoi, waiho ake rātou ki a rātou,

Tātou te urupā o rātou mā

Ngā waihotanga mai e hāpai nei i ō rātou wawata

Tūmanako hoki

Kia mau ki te kura whero

Kia mau ki te kura tāwhiwhi

Kei waiho tātou hei whakamōmona i te whenua tangata

Hokia ki ngā maunga kia purea tātou e ngā hau a Tāwhirimatea

Nō reira

Whakarongo, whakarongo, whakarongo

Ki te tangi a te manu e karanga nei

Tui, tui, tui, tuia

Tuia i runga, tuia i raro

Tuia i roto, tuia i waho

Tuia i te here tangata

Ka rongo te pō, ka rongo te ao

Tuia i te kāwai tangata

I heke mai i Hawaiki nui

I Hawaiki roa

I Hawaiki pāmamao

I hono ki te wairua

Ki te whai-ao ki te Ao-mārama

Tihei Mauri Ora.

*Ko Tainui me Mataatua nga waka,
Ko Kakepuku me Putauaki nga maunga,
Ko Waipa me Rangtaiki nga awa,
Ko Ngati Maniapoto me Ngati Awa nga iwi,
Ko Ngati Apa kura me Nga Maihi nga hapu,
Ko Kahotea me Tuteao nga marae,
Ko Te Awamutu me Te Teko aku kainga tipu,
Ko Thomas Rennie Te Matehura Manaia toku papa,
Ko Bonnie Te Pani Vercoe toku mama,
Ko William Wiremu Lance Manaia toku ingoa.*

*Ko te mea tuatahi ko te wehe ano ki a Io matuakore heoi ano te timatanga me
the whakotinga i nga mea katoa.*

Tuarua nga mihi atu ki a ratou nga mea kua wehe atu ke ki te po,

Nga manu whetua kua uhia ki roto i a Ihu,

Nga poutokomanawa i nga wharemairo a o tatou matua tipuna,

I puawai te ata huakitanga,

I unuhia ai a tatou maha o tikitiki o Rangi,

I unuhia te hunga mate ki te hunga, te hunga o te tuawhakarere.

*No reira, he mihi aroha tenei kia ratou nga kaitautoko i nga rangahau kupu
korero nei.*

*Ratou nga mea i whakatuwheratia o ratou ngakau, o ratou whakaaro, o ratou
kupu korero hei rauemi rangahau mo te iwi.*

*Koutou nga mea e okioki ana i waenganui i nga uauatanga o te Ao Hurihuri
nei.*

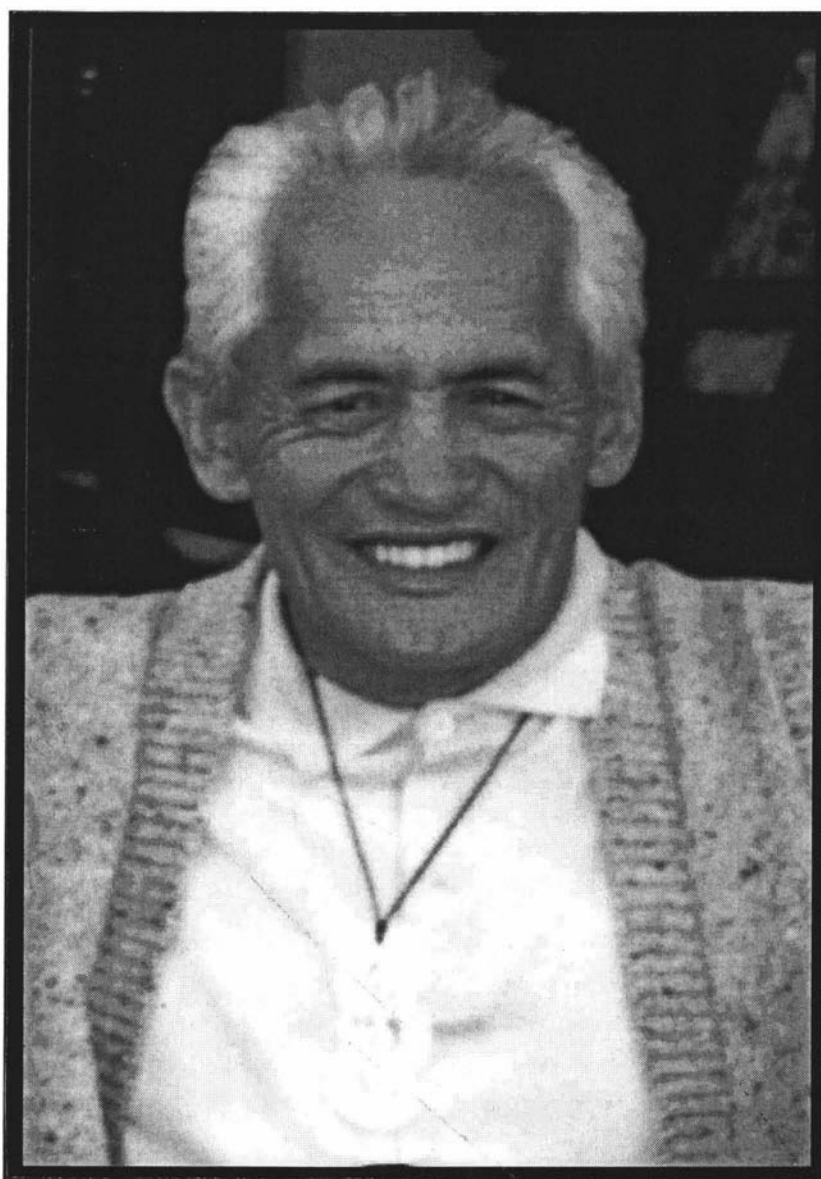
*Koutou nga mea e whawhai ana ma tatou hei whakapai nga ahuatanga o te
iwi i nga tau rua mano kei te heke mai.*

Kia kaha, kia toa, kia manawanui.

Tena koutou, tena koutou, kia ora ano tatou katoa.

Nga Mihimihi

This thesis is dedicated to the memory of my father, Thomas Rennie Te Matehura Manaia who died suddenly in May 2001, six months prior to the completion of this study. A kind and gentle man who lived his life for others and encouraged me towards achievements in education. No reira e Pa, e kore tenei i wareware i a koe. Na nga mahi i mahia mau, ka whakatutukitia to tamaiti nei i nga maunga teitei i te Ao hurihuri. Noho atu ra tae noa ki te wa ka tutaki ano taua.



First, my sincere thanks to Eleanor for your understanding, patience, practical support and continuous effort in maintaining our whanau throughout the duration of this study. Thanks must also go to my children, Tiamarama and Taniera, who are never far from my thoughts and have sustained me with emotional support and a spiritual presence that only children can engender in a proud parent.

Not enough can be said to acknowledge the contribution of my supervisor, Professor Mason Durie, without whom this thesis would not have been proposed, implemented and completed. For five years of advice, encouragement, motivation and at times inspiration, I thank you. For providing me with an opportunity and the pathway to an achievement I may never have considered, I am eternally grateful, not only for myself but for the future opportunities this may bring to my whanau, friends and other tertiary training Māori I am now able to help.

Thanks also to my marae, Kahotea (Ngati Apakura hapu) and Tuteao (Nga Maihi hapu) both of whom were consulted in the development of this research and held hui where I also presented parts of this thesis. Special mention must be made of Kuia Rangitiepa Huriwaka (Aunty Mangu) from Kahotea and Koro Charlie Vercoe from Tuteao both of whom agreed to provide tikanga and kaumatua support when needed.

Thank you to all the participants and respondents who participated in this study many of whom were involved several times at different stages and willingly gave their time. I would like to acknowledge those participants who passed away before this thesis was completed: Betty Hunapo, Aroha Biel, and Muriwai Popata all of whom were respected Māori health campaigners and will long be remembered for their contributions to the Māori health cause. No reira e nga Whaea, haere atu koutou ki te ringa atawhai o te Atua, haere, haere, haere atu ra.

This thesis was financed through a Doctoral Training Fellowship with the Health Research Council of New Zealand and hosted by Te Pumanawa Hauora, Māori Health Research Unit at Te Putahi a Toi, School of Māori Studies, Massey University, Palmerston North. Many thanks must go to the unit Director, Chris

Cunningham, who was also the supporting supervisor of this study, and the unit administrator, Roimata Olson, who co-ordinated many of the administrative requirements needed to conduct this research. Supplementary financial assistance was also received from the Waikato Raupatu Lands Trust of Tainui in the form of a Tumate Mahuta Scholarship.

The last two years of this research was conducted in Auckland and hosted by the Māori Department, Te Puna Wananga, at the Auckland College of Education and Applied Behavioural Science in the Faculty of Medical and Health Sciences at the University of Auckland. Thanks must go to the Head of Te Puna Wananga, Tony Trinick, and the Director of Applied Behavioural Science, Dr Peter Adams, both of whom generously hosted me with limited reciprocal benefit or gain.

Acknowledgement must also go to the Centre for Corporate Change, University of New South Wales, Sydney, Australia, who provided specialist management research on the change management issues in this thesis.

Much of this research was collected during previous employment as a Senior Policy Analyst for the Ministry of Health in Wellington, a Policy Analyst for Auckland Healthcare Services Ltd (A+) and an Analyst for the Manukau Urban Māori Authority (MUMA). In this regard, I would like to thank my previous Managers for their contribution, even though some of them may not have been aware they were participating. Kim Workman, Ria Earp and Kathy Holland from the Ministry of Health, Naida Povey and Therese Weir from A+ and June Jackson from MUMA.

Many others provided academic advice, moral and emotional support or practical help through direct participation or group involvement such as the Māori Provider Reference Group. I am grateful to Kris MacDonald, Thomas Maniapoto, Des Martin, Riki Niania, Rob Cooper, Nigel Chee, Christine Matangi, Ngaire Whata, Mihi Ratima, Kris Maxwell, Te Miringa Huriwai, Hakopa Paul, Andrew Sporle, John Raeburn, and Colin Mantel. Special thanks also to Linda Thompson, who

willing provided advice, comment, analysis and assistance throughout the duration of this study.

Finally, to my mother, my Auntie's, my Uncles, my brothers, my nieces, my nephews and the rest of my extended whanau, I thank you for your continuing support and your on-going encouragement of my work and associated goals. No reira koutou katoa aku whanaunga me aku hoa piripono, tena koutou, tena koutou, tena koutou katoa.

TABLE OF CONTENTS

HE MIHI - MĀORI GREETING	I
ACKNOWLEDGEMENTS	II
CONTENTS	III
FIGURES AND GRAPHS	IX
REFERENCES	X
GLOSSARY OF MĀORI TERMS	XI
APPENDICES	XI
<u>CHAPTER ONE: THE FOUNDATIONS</u>	1
1. Overview	1
2. The Hypothesis	2
3. The Health Sector	2
4. Change Management Theory	3
5. Kaupapa Māori Health Research	7
6. Māori Research Paradigms	13
7. The Methodology	15
8. The Selection of Interviews and Case Studies	18
9. Confidentiality	22
10. The Impact of Previous Roles	22
11. Kaumatua and Tikanga Support	22
12. The Format	23
13. Conclusion	26
<u>CHAPTER TWO: MĀORI DEVELOPMENT AND THE <u>INEVITABILITY OF CHANGE.</u></u>	29
1. New Zealand Political Development - Implications for Māori	30
2. The Treaty of Waitangi	35
3. The Treaty of Waitangi in Health	37
4. Māori Development Research	39
5. A Future for Māori Development	40
6. Conclusion	41

<u>CHAPTER THREE: MĀORI SOCIO-ECONOMIC STATUS</u>	45
1. Māori Health Information	45
2. Māori Demographics	46
3. The Māori Growth Rate	47
4. A Young Māori Population	48
5. Māori Life Expectancy	48
6. Māori Employment	49
7. Māori Unemployment	50
8. Māori in Early Childhood Education	52
9. Māori in Education	53
10. Māori Education Attainment	54
11. Māori Income Levels	55
12. The Future of Māori Health Status	57
- <i>Urbanisation</i>	58
- <i>A Young Māori Population</i>	59
13. The Burden of Disease	61
14. Conclusion	63
<u>CHAPTER FOUR : MĀORI HEALTH DEVELOPMENT</u>	66
1. Early Māori Health Development	67
2. A Māori Perspective of Public Health	69
3. Māori Models of Health	70
4. Māori Health Policy Guidelines	71
5. Socio-economic Determinants of Health	73
6. Addressing Health Disparities	75
7. Māori Provider Development	79
8. Integrated Care and Māori Health	81
9. Conclusion	83
<u>CHAPTER FIVE: CROWN POLICIES FOR CHANGE</u>	87
1. Privatisation	87
2. The Economic Reforms – 1984 to 1993	88
3. From Bureaucracy to Business	91
4. The 1991 Health Reforms	93

5. The Impact of the Health Reforms on Māori	95
6. Public Sector Change and Māori Development	96
- <i>Te Puni Kokiri – The Ministry of Māori Development</i>	96
7. Conclusion	98
<u>CHAPTER SIX: FROM POLICY TO PURCHASING</u>	101
1. Māori Health Policy	101
2. An Inter-sectoral Approach	103
3. The Māori Health Policy Group – Te Kete Hauora	104
4. Māori Health Policy Projects	108
5. The Health Reforms	109
6. Māori Health Policy and Purchasing	110
7. Māori Health Funding	111
8. Māori Co-purchasing Organisations	115
9. Māori Integrated Care Arrangements	117
- <i>Health Care Plans</i>	118
10. Conclusion	119
<u>CHAPTER SEVEN: MĀORI HEALTH SERVICE PROVIDERS</u>	123
1. Definitions of a Māori Health Service Provider	123
2. Māori Providers and Crown Agencies	127
3. Māori Health Programmes and Services	131
- <i>By Māori for Māori Services</i>	131
- <i>Tikanga Māori Health Services</i>	132
- <i>Rapua te Oranga Hinengaro</i>	132
- <i>Tipu Ora</i>	133
- <i>Te Roopu Matehuka</i>	133
- <i>Whare Oranga</i>	134
- <i>Oranga Niho</i>	134
4. Māori Provider Funding	134
5. Māori Provider Compliance	138
6. Māori Provider Capabilities	141
7. Māori Providers and Māori Communities	142
8. Māori Providers and Māori Provider Development	146

9. Monitoring Māori Providers	148
10. Conclusion	153
<u>CHAPTER EIGHT: MAINSTREAM ENHANCEMENT.</u>	158
1. Cultural Safety	159
2. Cultural Competence	160
3. Effective Health Service Delivery	162
4. Māori Providers and Mainstream Providers	164
5. Improving the Effectiveness of Mainstream Health Services	167
6. Models of Mainstream Enhancement	170
- <i>The Māori Health Management Service – He Kamaka Oranga</i>	171
7. Mainstream Enhancement Interviews	178
8. Conclusion	183
<u>CHAPTER NINE: THE CHANGING MANAGEMENT OF MĀORI HEALTH DEVELOPMENT.</u>	187
1. Holistic Service Delivery	189
2. Barriers to Māori Access of Health Services	192
3. Location and Transport	193
4. Cultural Wellness	194
5. A Māori Focussed Approach	195
6. Culturally Appropriate and Effective Health Services	195
7. Disparities in Health Status	197
8. Māori Participation in the Health Sector	197
9. Outcomes from the Health Reforms	200
10. Conclusion	201

FIGURES AND GRAPHS

FIGURES & TABLES	DESCRIPTION	PAGE
Table 3.1	Employment to Population Ratios for Māori and Non-Māori by sex – 1986 to 1996.	50
Figure 3.2	Unemployment to Population Ratios for Māori and Non-Māori by sex - 1996.	51
Figure 3.3	Māori Enrolment in Early Childhood Education – 1986 to 1996.	52
Figure 3.4	Māori as a Proportion of Tertiary Students – 1991 & 1996.	54
Figure 3.5	Highest Qualification by Ethnicity – 1986 & 1996.	55
Figure 3.6	Distribution of Māori Incomes compared to all Incomes – 1986 to 1996.	56
Figure 3.7	Growth in the Māori Population over time.	57
Figure 3.8	Māori Urbanisation.	58
Figure 3.9	Māori descent, Māori ethnicity and Iwi affiliation – 1991 & 1996.	59
Figure 3.10	Māori Incomes – 1986 to 1996.	60
Figure 5.1	The Restructuring of Public Sector Agencies.	91
Table 8.1	The He Kamaka Oranga - Māori Health Management Structure.	172
Figure 8.2	The Māori Encounter Heritage Framework	173
Figure 9.1	Holistic Service Delivery and Funding Providers	190

GLOSSARY OF MĀORI TERMS

Aotearoa	New Zealand
Aroha	Love
Atua	God
Awhi	to support / to comfort / hug
Hauora	Healthy
Hapu	Sub-tribe
Hoha	Nuisance
Hui	Meeting / gathering / conference
Iwi	Tribe
Kai	Food
Kapahaka	Maori performing arts
Kaumatua	A Māori elder.
Kaupapa	Topic / plan / idea / concept / philosophy
Koha	Gift, donation.
Kohanga Reo	Māori language nest / Total immersion Māori language early childhood care centre
Koro	Māori male elder.
Kura kaupapa Māori	Total immersion Māori language school
Kuia	Māori women elder.
Manaaki / Manakitanga	To care for / to take care of.
Marae	Traditional Māori meeting house
Matauranga	Education / knowledge / training
Moana	Sea
Pakeha	Non-Māori / European
Reo	Language
Tane	Man / Male
Tapa	Side
Tapu	Sacred
Te	The

Tikanga	Māori protocol
Tino Rangatiratanga	Self determination
Wahine	Woman / Female
Wananga	Learning session / Place of learning / University
Wha	Four
Whakapono	Faith.
Whanau	Family
Whare	House
Whenua	Land

Sources:

Ryan, P.M., (1995) *The Reed Dictionary of Modern Māori*. Auckland, Reed.

Williams, H.W., (1985) *A Dictionary of Māori Language*. Wellington: Government Printer.

APPENDICES

CONTENT	PAGE
References	207
Appendix A: Thesis Research Respondents and Interviewees	219
Appendix B: Policy Agency Interview Questionnaire	222
Appendix C: Purchasing Agency Interview Questionnaire	223
Appendix D: Purchasing Agency Interview Questionnaire	224
Appendix E: Conference & Seminar Presentations	225
Appendix F: The Māori Provider Reference Committee Hui	227
Appendix G: The Māori Provider Reference Committee Members	231